

CERTIFICATE OF LOCATION OF GOVERNMENT CORNER

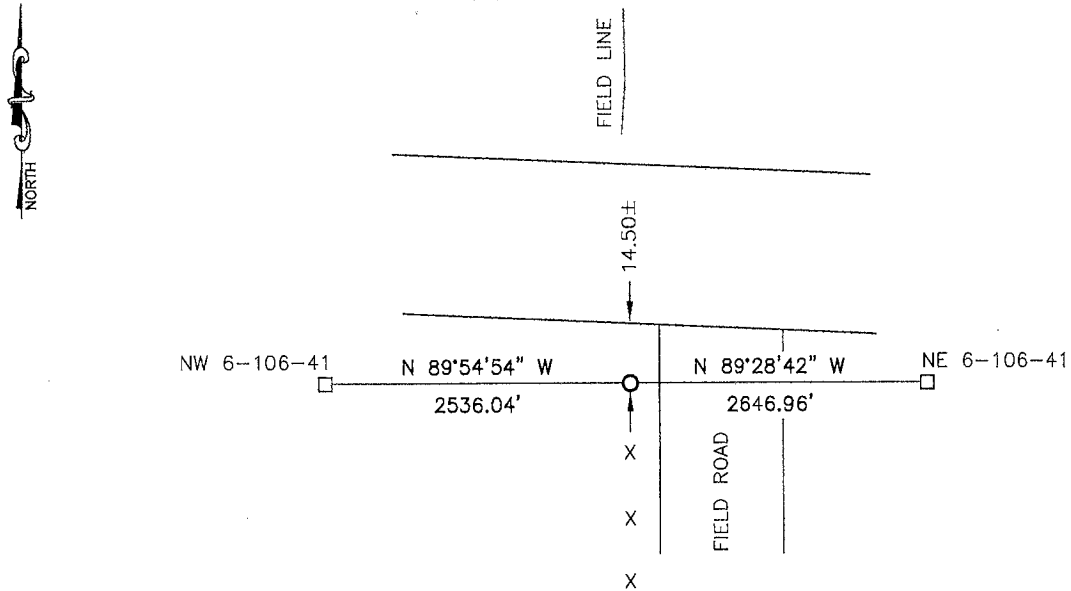
NORTH QUARTER Corner of Section 6, Township 106, Range 41, 5TH P.M.

STATE OF MINNESOTA, County of MURRAY

At the corner location shown on the sketch:

- On _____ found a _____
DATE
- left monument as found, lowered monument, removed monument (explain)
- On 11/21/13 placed a 5/8" iron w/seal #43844
DATE

SKETCH OF REFERENCE TIES



Minnesota State Plane Coordinate
 System Murray County Datum
 NAD83 (1996)
 N: 163508.427
 E: 487558.333

Statement of evidence relative to this corner location is on back of page.

I hereby certify that this document and the data contained herein was prepared by me or under my direct supervision.

Samuel Burk 2/4/14
 SIGNATURE DATE

Registration No. 43844

- Land Surveyor, Professional Engineer
- County Surveyor, County Engineer

OFFICE OF THE COUNTY RECORDER

County of _____

I hereby certify that this document was filed in the Co. Recorders office at _____ M on the _____ day of FEB 5 2014 A.D. 20 _____

County Recorder *James V. Johnson*
 By _____, Deputy

DOCUMENT NO. _____

Statement of Evidence

In 1871, J.W. Myers did the original survey of the north line of the township.

On October 24, 1891, J.W. Woolstencroft, County Surveyor, recorded stone at the corner.

~~On May 9, 2012, the Murray County Highway Department found an iron with cap at the corner.~~

On November 22, 2013, Bueltel-Moseng Land Surveying dug with backhoe on line and on the westerly projection of the existing centerline of road. Found nothing. We set $\frac{5}{8}$ " iron with seal #43844 by projecting the road to the east westerly and using single proportionate distances between section corner. It is in line with fence to the south, field line to the north, and 14.50'± south of shoulder of the road.